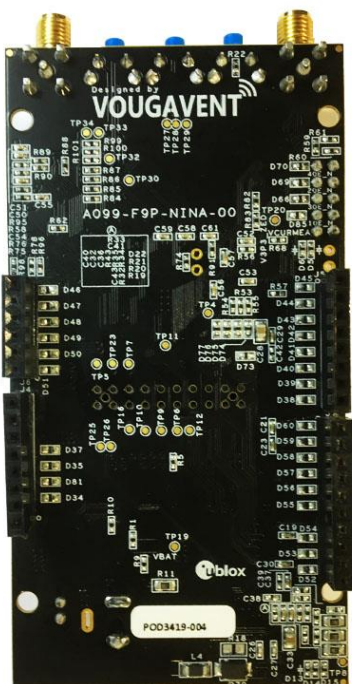


UBLOX NINA B3 BLE PRECISION GPS RECEIVER

Power of precision for all your positioning requirements

This reference board support ZED-F9P & NINA B3 open CPU BLE. The development can be directly integrated to Arduino for faster software development environment.

- Concurrent reception of GPS, GLONASS, Galileo and BeiDou
- Multi-band RTK with fast convergence times and reliable performance
- High update rate for highly dynamic applications
- Bluetooth range up to 1 km (open environment)
- Centimeter accuracy in a small and energy efficient module



GPS
ZED-F9P
10 cm Accuracy

Bluetooth

Arduino Pin
compatible

Built in Sensors

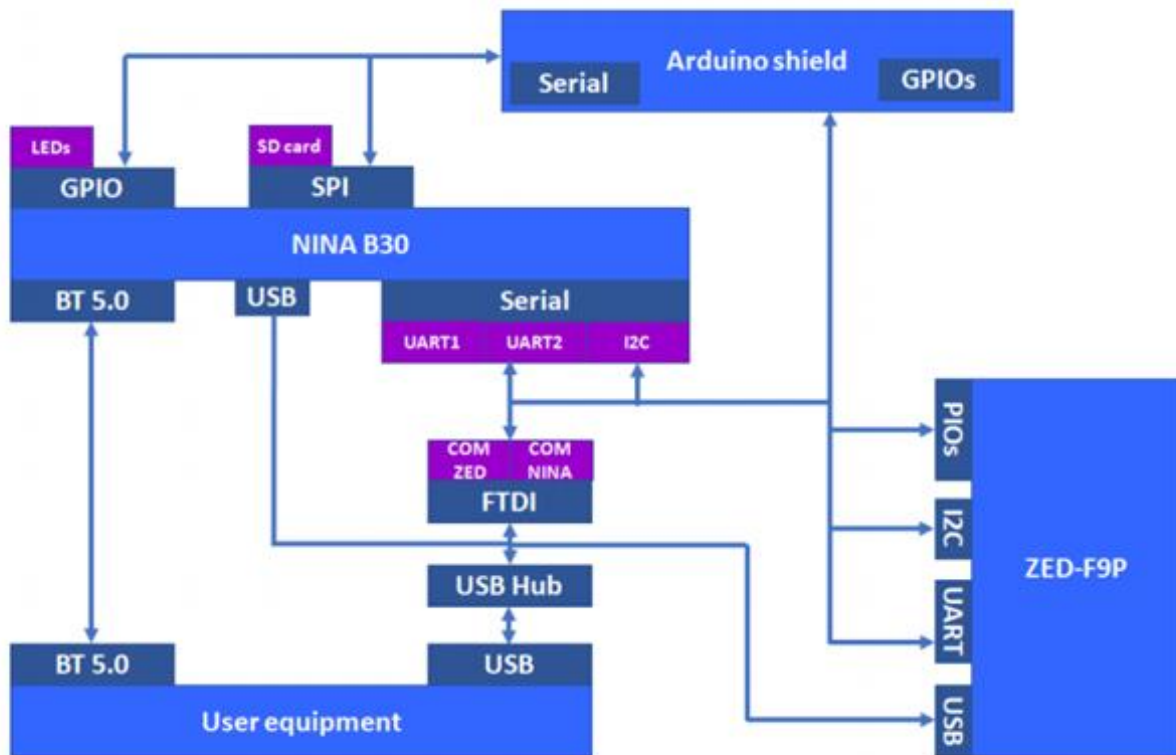
Contact us

+91 98451 16275

info@vougavent.com

www.vougavent.com

BLOCK DIAGRAM



Processor

- Full Bluetooth 5 with high data rate and long range
- Pin compatible with other NINA modules
- GATT, beacons, and mesh Protocols
- Superior security functionality
- Global certification
- Multiple antenna options

Application

- Smart buildings
- Vehicle Tracking
- Industry 4.0
- Industrial sensor networks
- Asset tracking solution
- Building automation systems